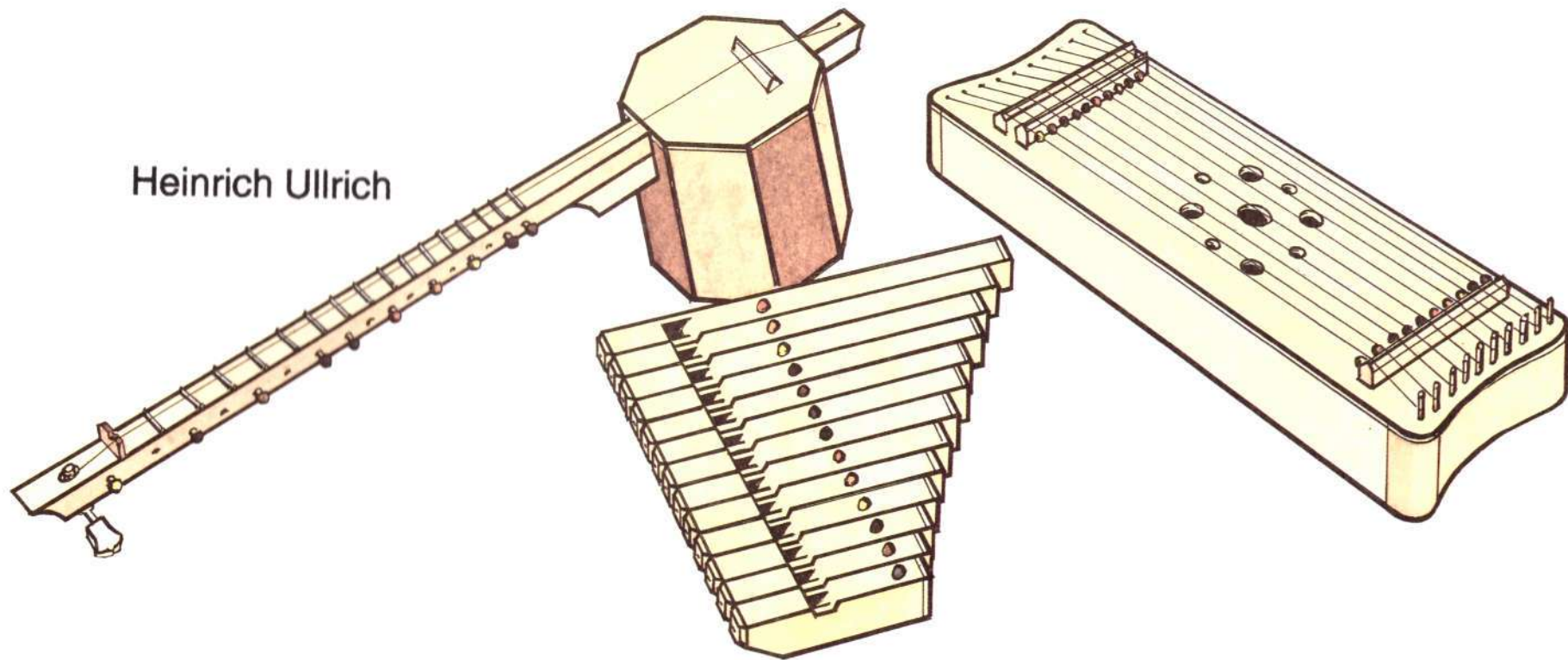


ULWILA

FARBKLANG



Heinrich Ullrich

Grundkurs **3**
B

1. Auflage

© 1995 by Heinrich Ullrich

Alle Rechte vorbehalten

Titel, Texte und Bearbeitungen sind urheberrechtlich geschützt.
Jegliche Vervielfältigung bedarf der schriftlichen Genehmigung.
Dies gilt für alle Vervielfältigungsverfahren: Fotokopie, Film,
Folie, elektronische Medien etc.

1995

ULWILA-Verlag, Germersheim

GRUNDKURS 3

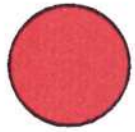
B

Lehrgang zum kinderleichtesten Erlernen des Musizierens

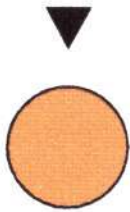
Herausgegeben und bearbeitet

von

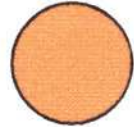
Heinrich Ullrich



Die



Son



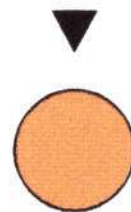
- ne



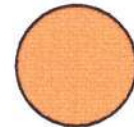
spie



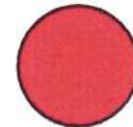
- gelt



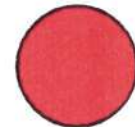
sich



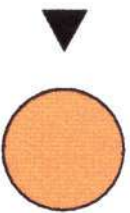
im



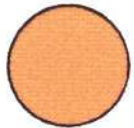
Meer,



das



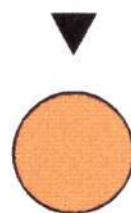
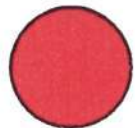
glit



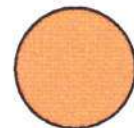
- zert



schwarz - weiß,



fast



wie



Teer.

g g a a

Die Son - ne spie - gelt sich im Meer, das

glit - zert schwarz-weiß, fast wie Teer.

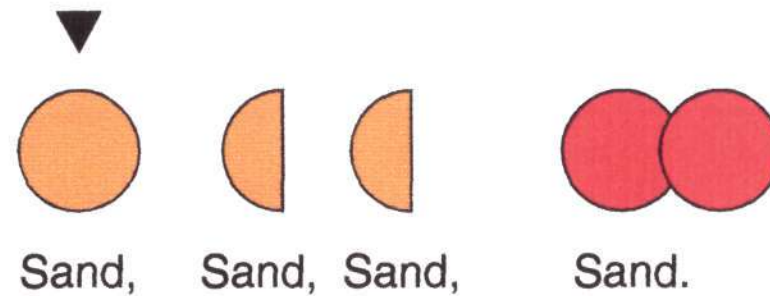
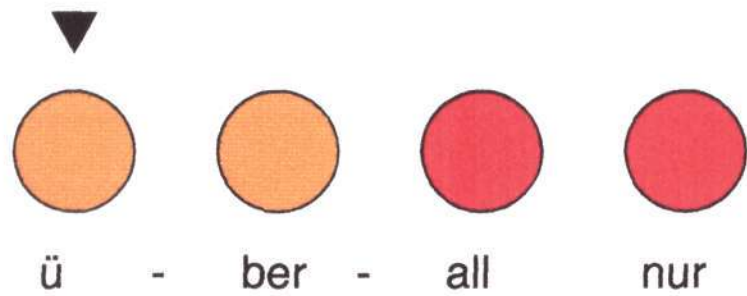
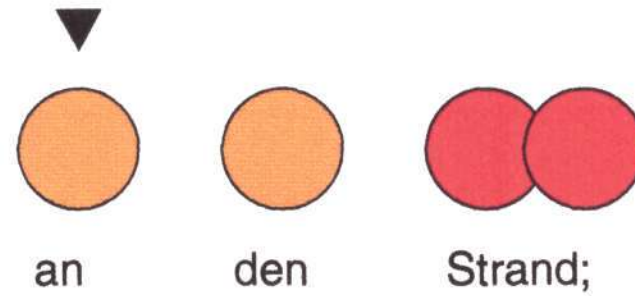
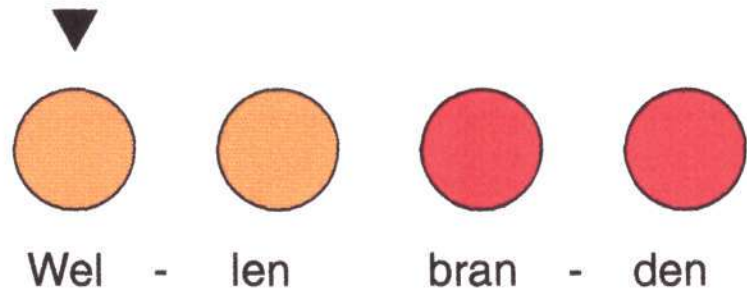


Diagram illustrating the formation of the vowel 'a' and the consonant 'g' using musical staves and colored shapes:

- Vowel 'a':** Shown with an orange semi-circle and an orange circle, each paired with a musical staff showing a note on the second line.
- Consonant 'g':** Shown with a red circle and two overlapping red circles, each paired with a musical staff showing a note on the second line.

Musical staff in 4/4 time, showing the melody for the first line of the song. The notes are: quarter note (orange), quarter note (orange), quarter note (red), quarter note (red), quarter note (orange), quarter note (orange), and half note (red).

Wel - len bran - den an den Strand;

Musical staff in 4/4 time, showing the melody for the second line of the song. The notes are: quarter note (orange), quarter note (orange), quarter note (red), quarter note (red), quarter note (orange), quarter note (orange), quarter note (orange), and half note (red).

ü - ber - all nur Sand, Sand, Sand, Sand.

▼
Ket - ten,

▼
Rin - ge,

▼
welch schö - ne

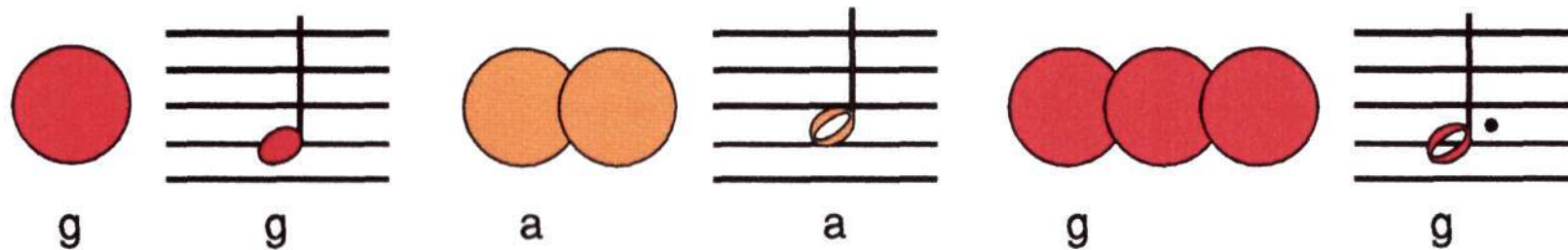
▼
Din - ge

▼
kauft der Pa

▼
- pa,

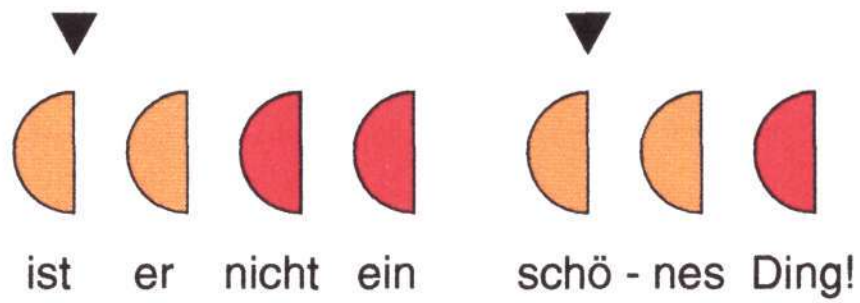
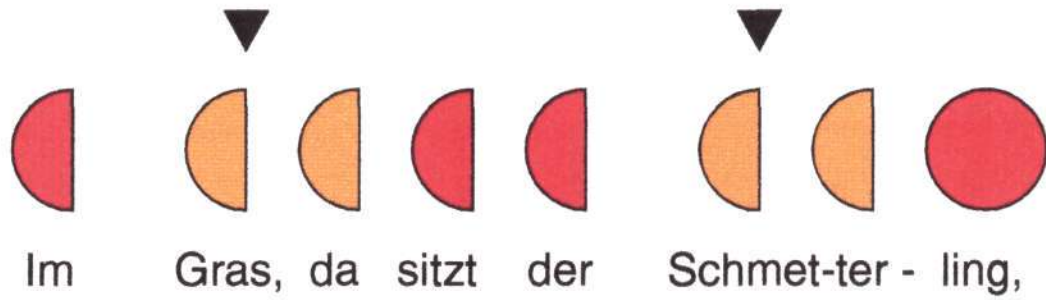
▼
für die Ma

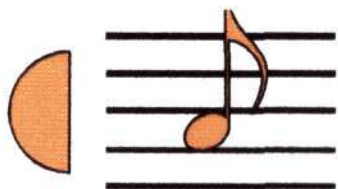
▼
- ma.



Ket - ten, Rin - ge, welch schö - ne Din - ge

kauft der Pa - pa, für die Ma - ma.





a

a



g

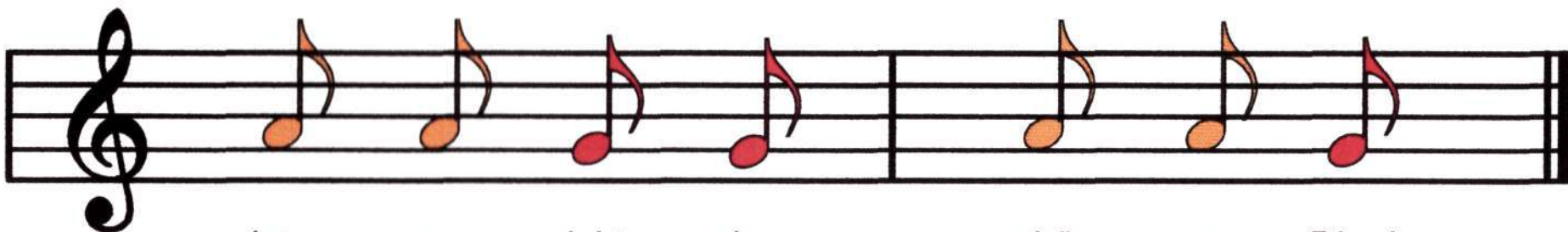
g



Im

Gras, da sitzt der

Schmet - ter - ling,



ist

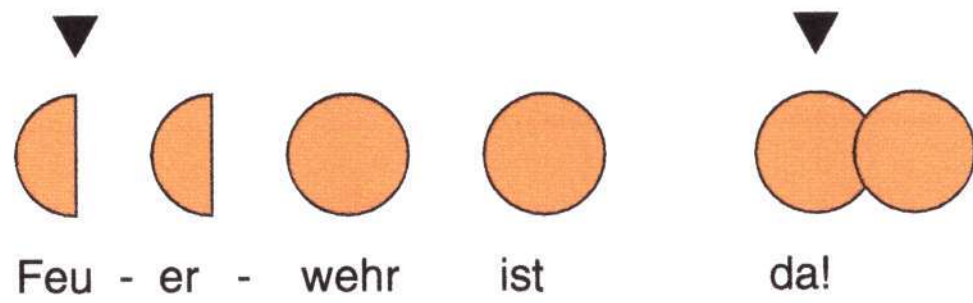
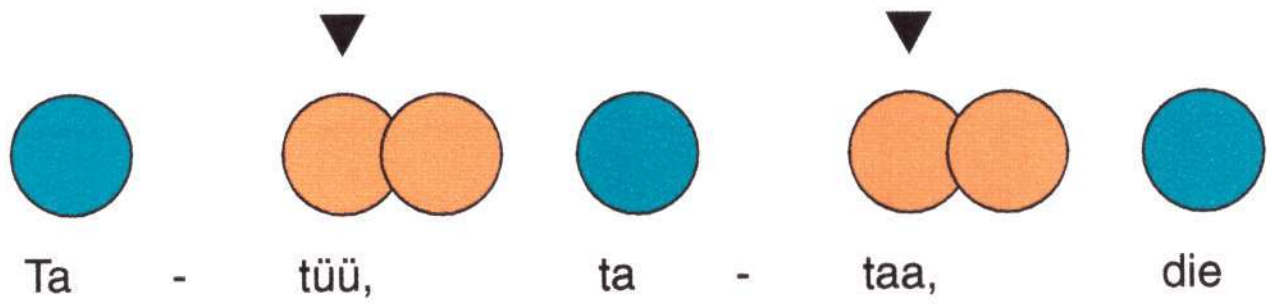
er

nicht

ein

schö - nes

Ding!



a a e e a a

3
4

Ta - tüü, ta - taa, die

Feu - er - wehr ist da!

▼
Kro - ko - dil Kram

▼
bam - bu - lum liegt

▼
im - mer faul im

▼
Was - ser rum.

Diagram illustrating vowel sounds on a five-line staff:

- e**: A blue circle on the left, and a blue note on the first line of the staff.
- a**: An orange circle on the left, and an orange note on the second line of the staff.
- a**: Two overlapping orange circles on the left, and an orange note on the second line of the staff.

Musical notation for the first line of the song in 4/4 time, featuring a treble clef and a key signature of one flat (B-flat). The melody consists of quarter notes: G4 (orange), F4 (blue), G4 (orange), Bb4 (blue), G4 (orange), F4 (orange), G4 (orange), and F4 (blue).

Kro - ko - dil Kram - bam - bu - lum liegt

Musical notation for the second line of the song in 4/4 time, featuring a treble clef and a key signature of one flat (B-flat). The melody consists of quarter notes: G4 (orange), F4 (blue), G4 (orange), Bb4 (blue), G4 (orange), F4 (orange), and G4 (orange).

im - mer faul im Was - ser rum.

